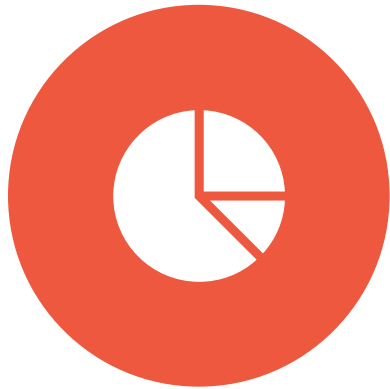


The Incident Command System (ICS)



HOW YOU FIT IN

The Organizational Chart



HOW JOBS FIT
INTO ICS



WHAT EACH JOB
DOES



WHEN THEY ARE
ASSIGNED

Bringing
calm to
chaos



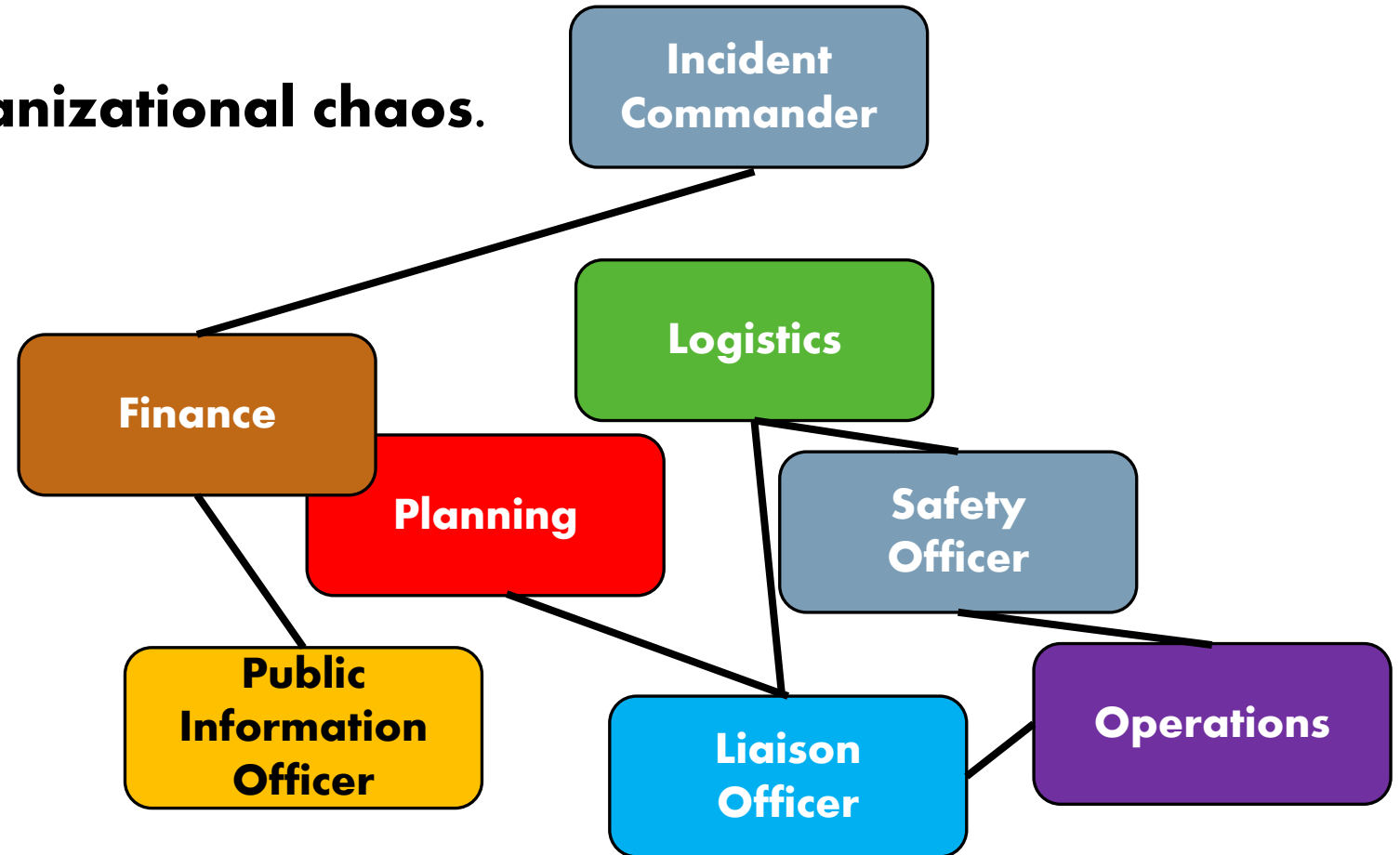
9/11/01



- Joe Pfeifer
- Battalion chief
- First IC

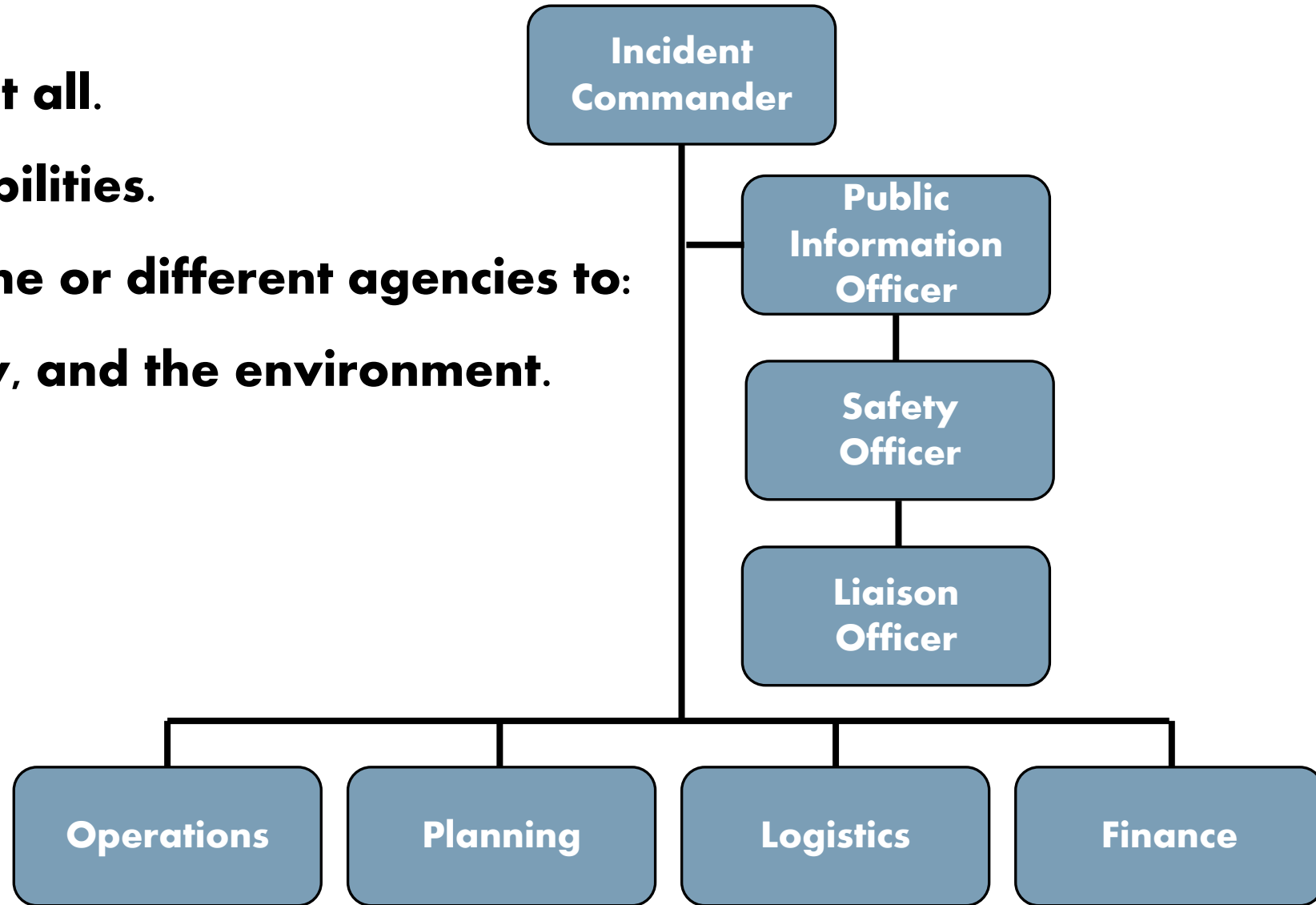
Basic ICS Organization

- **Without ICS, there is organizational chaos.**



Basic ICS Organization

- **One person cannot do it all.**
- **ICS breaks up responsibilities.**
- **Coordinate efforts of one or different agencies to:**
 - **Protect life, property, and the environment.**



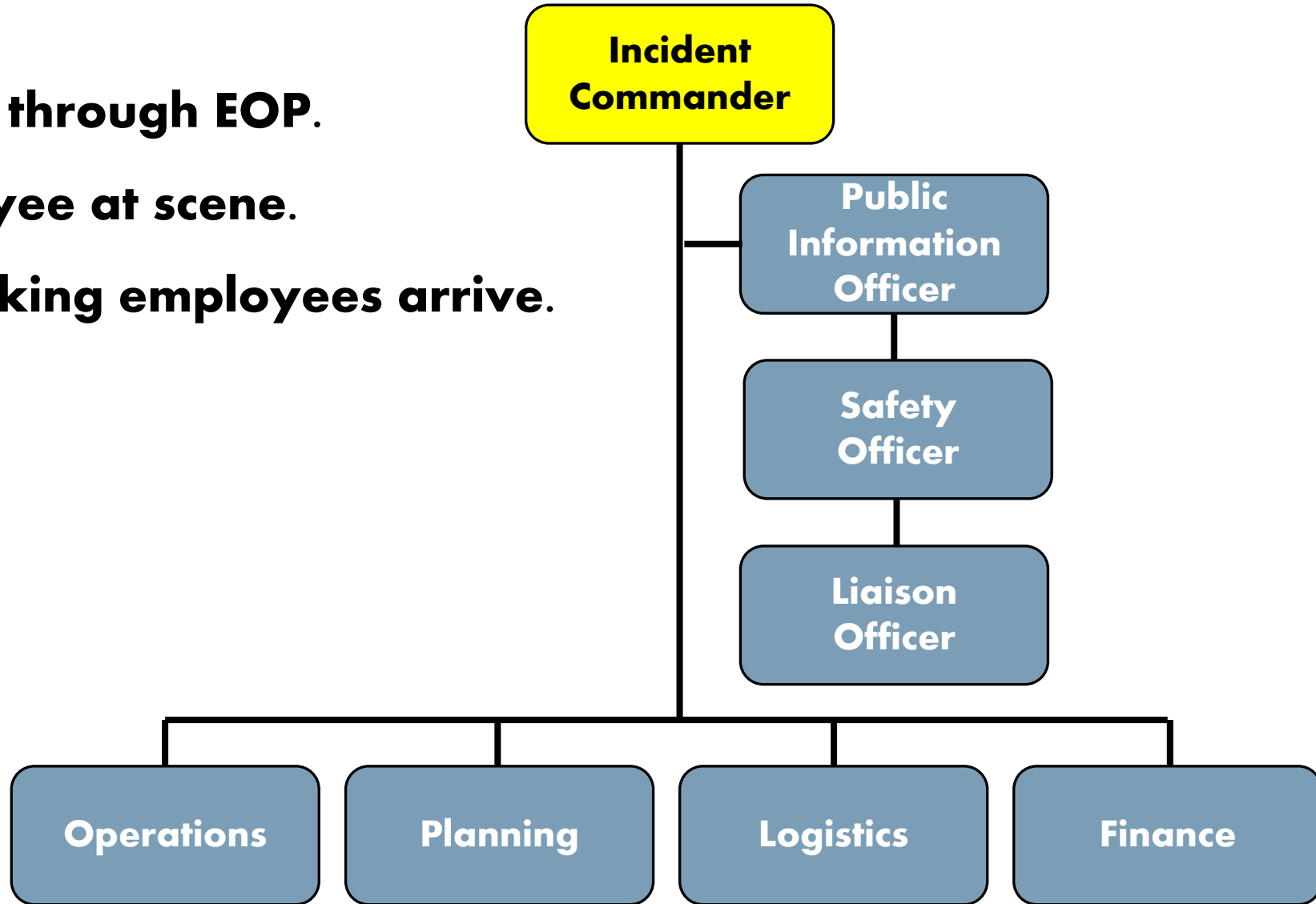
ICS Job Descriptions

- **Jobs may be assigned on-the-spot or predetermined through an updated Emergency Operations Plan.**



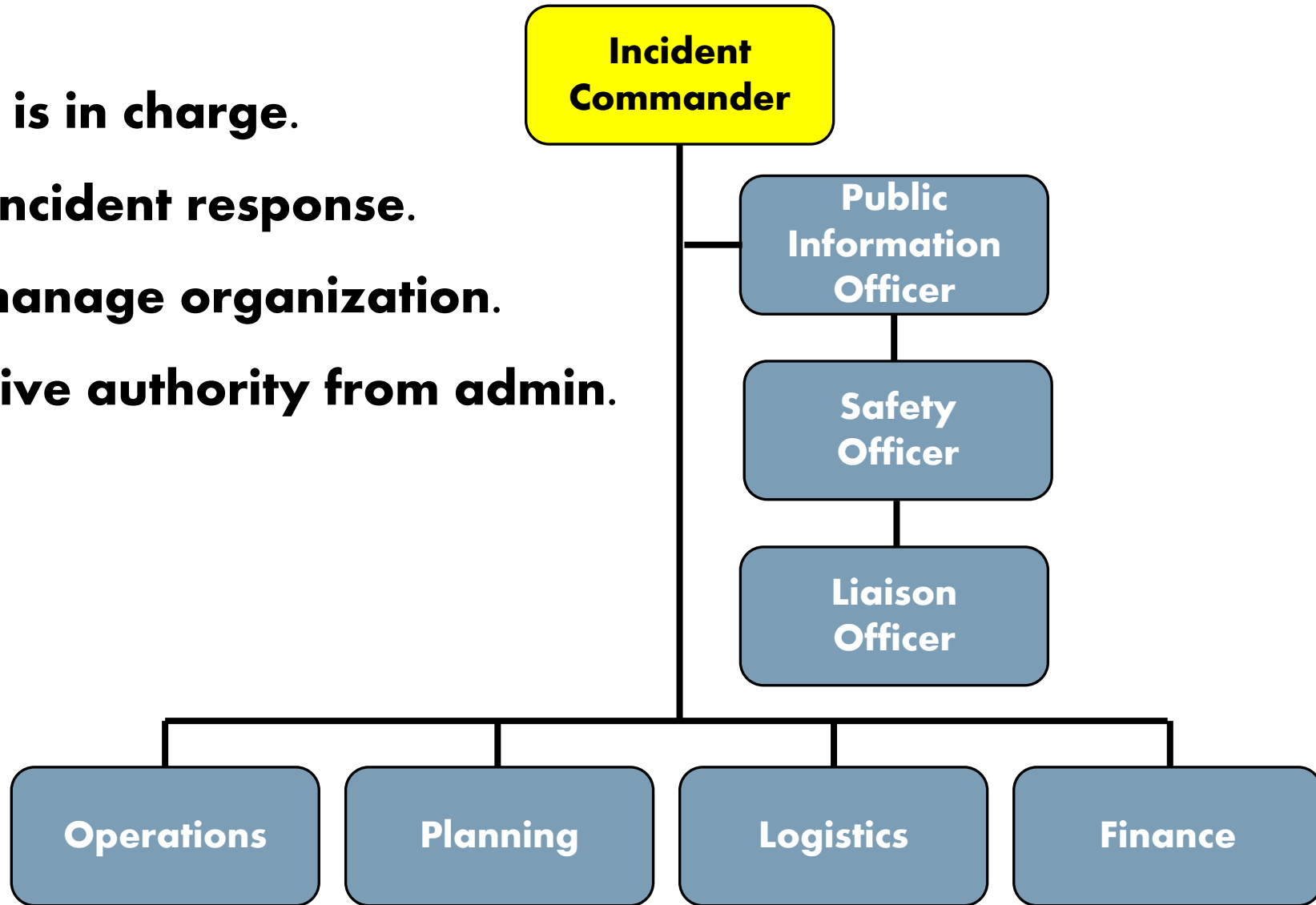
ICS Incident Commander

- **May be predetermined through EOP.**
- **Highest ranking employee at scene.**
- **May be relieved as ranking employees arrive.**



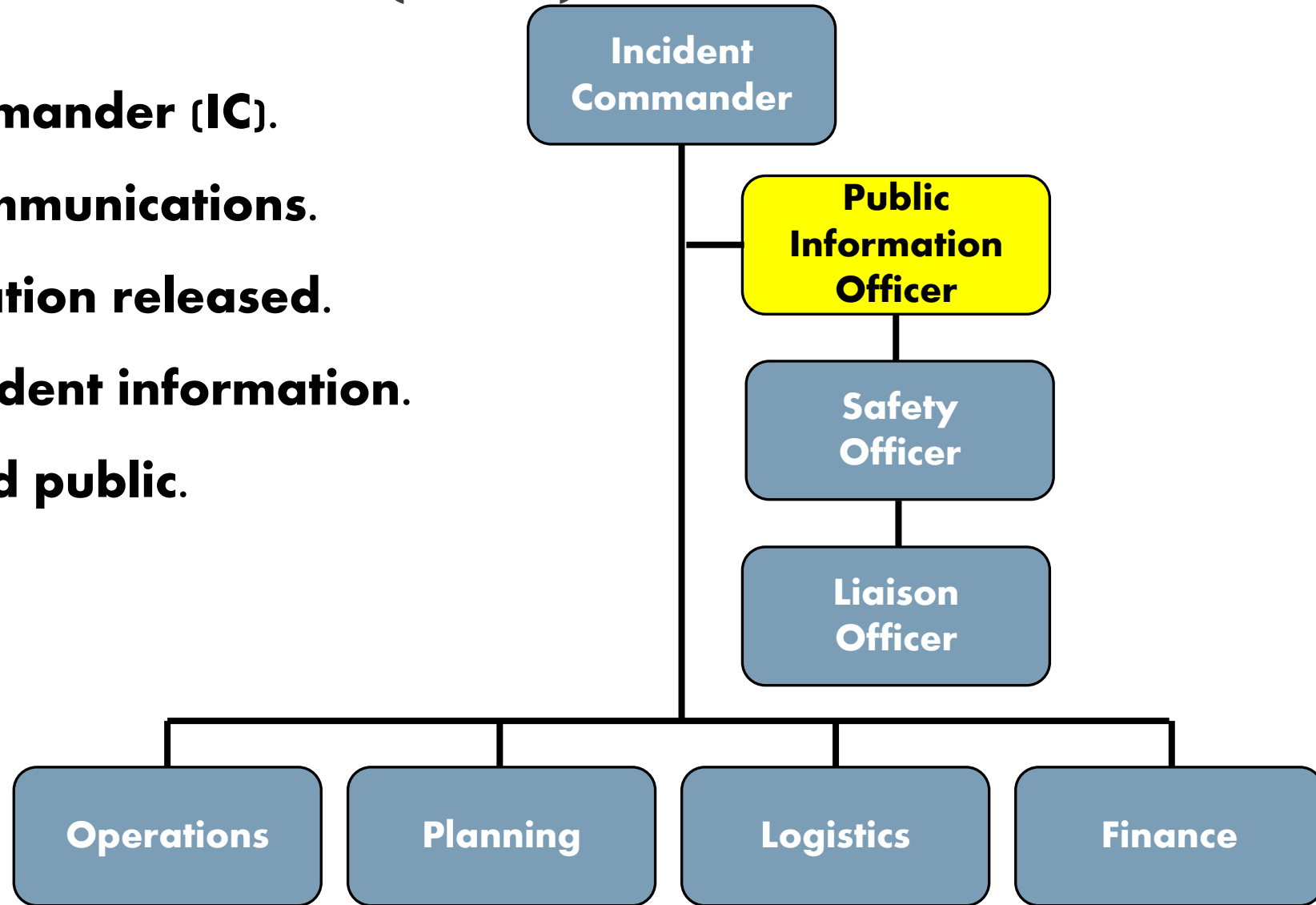
ICS Incident Commander

- **At the incident scene, IC is in charge.**
- **Overall leadership for incident response.**
- **Delegate authority to manage organization.**
- **Take direction and receive authority from admin.**



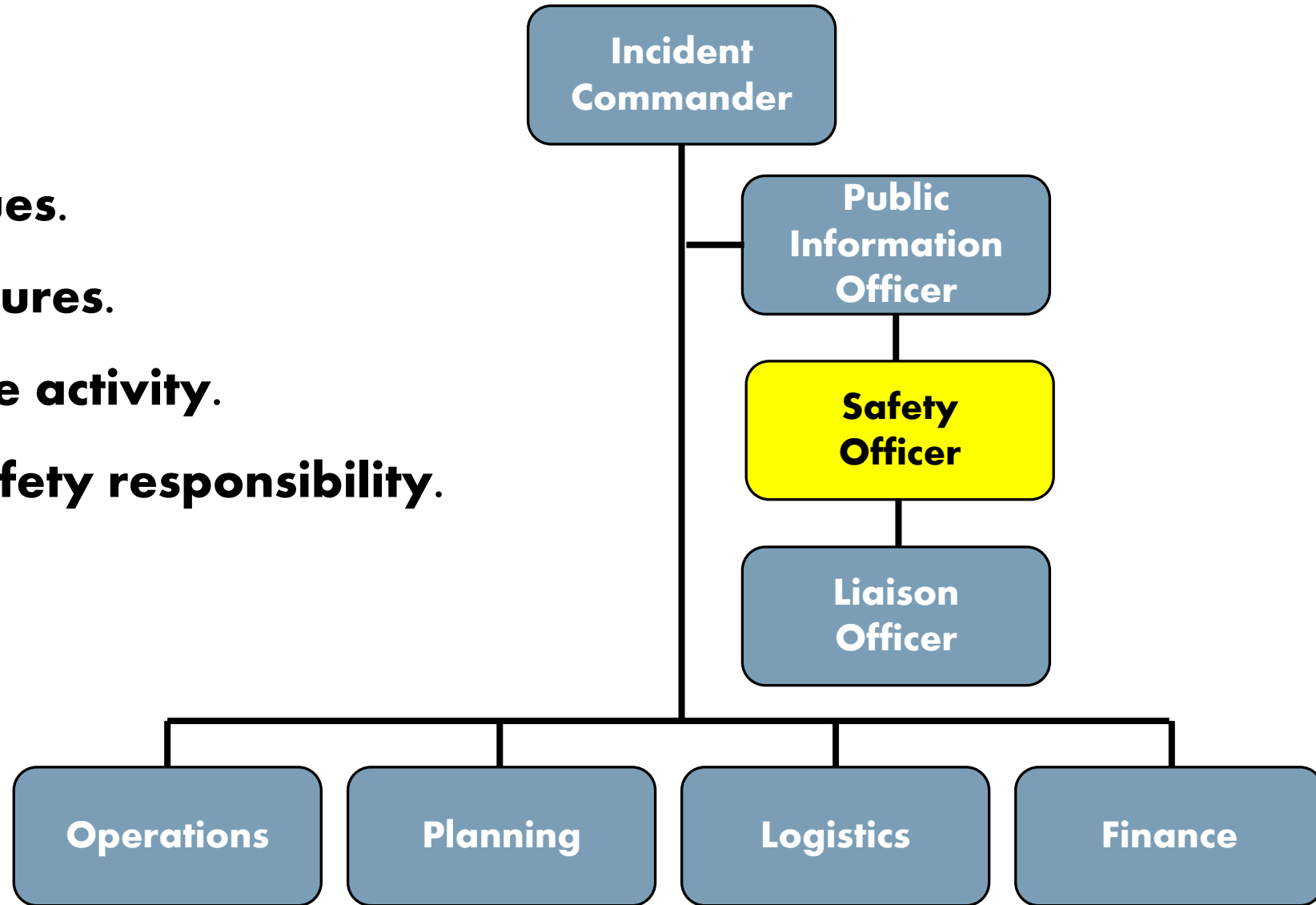
Public Information Officer (PIO)

- **Report to Incident Commander (IC).**
- **Coordinate internal communications.**
- **IC approves all information released.**
- **Primary contact for incident information.**
- **Provide info: media and public.**



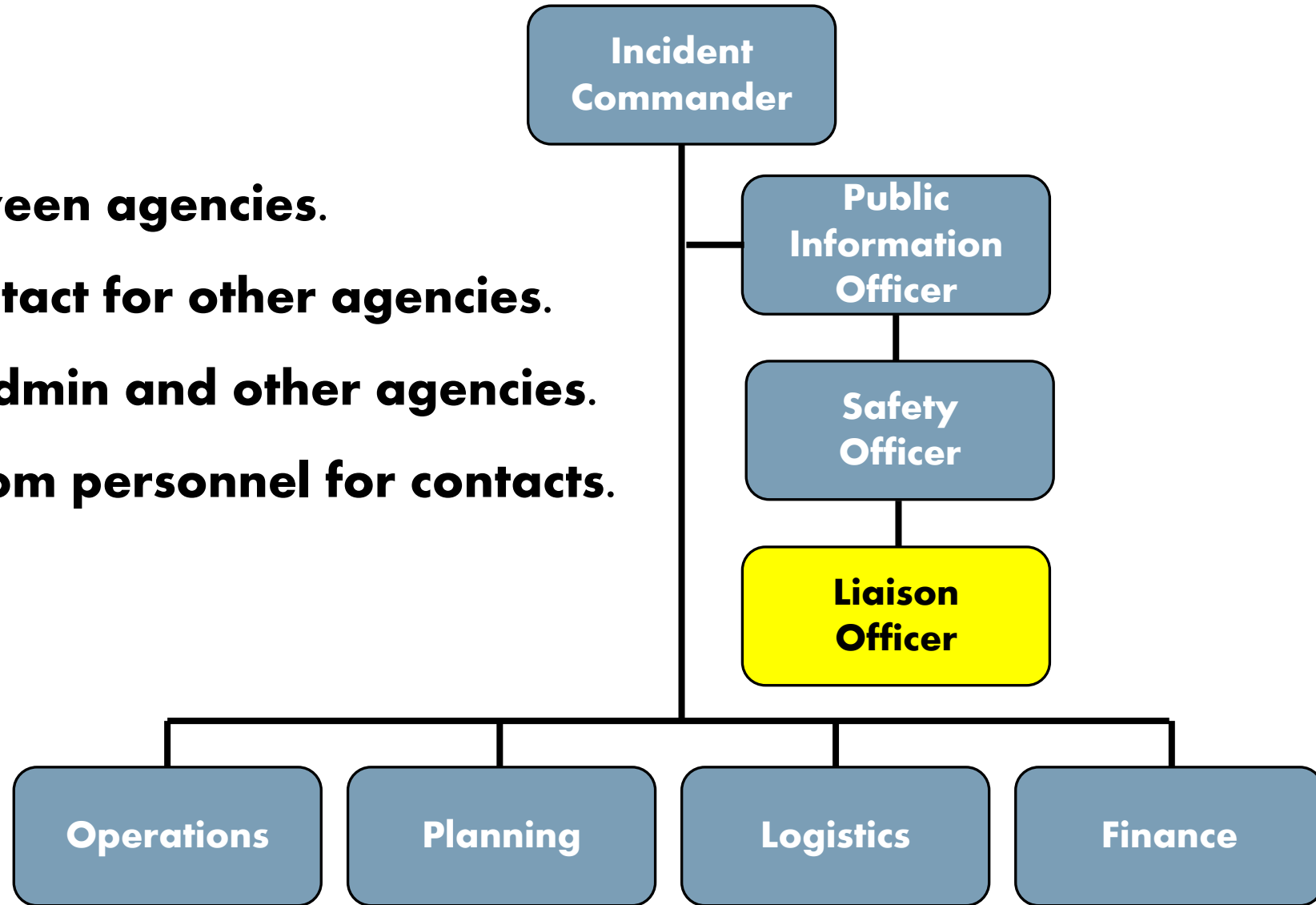
Safety Officer

- **Conduct risk analyses.**
- **Advise IC on safety issues.**
- **Implement safety measures.**
- **Authority to stop unsafe activity.**
- **Emphasize universal safety responsibility.**



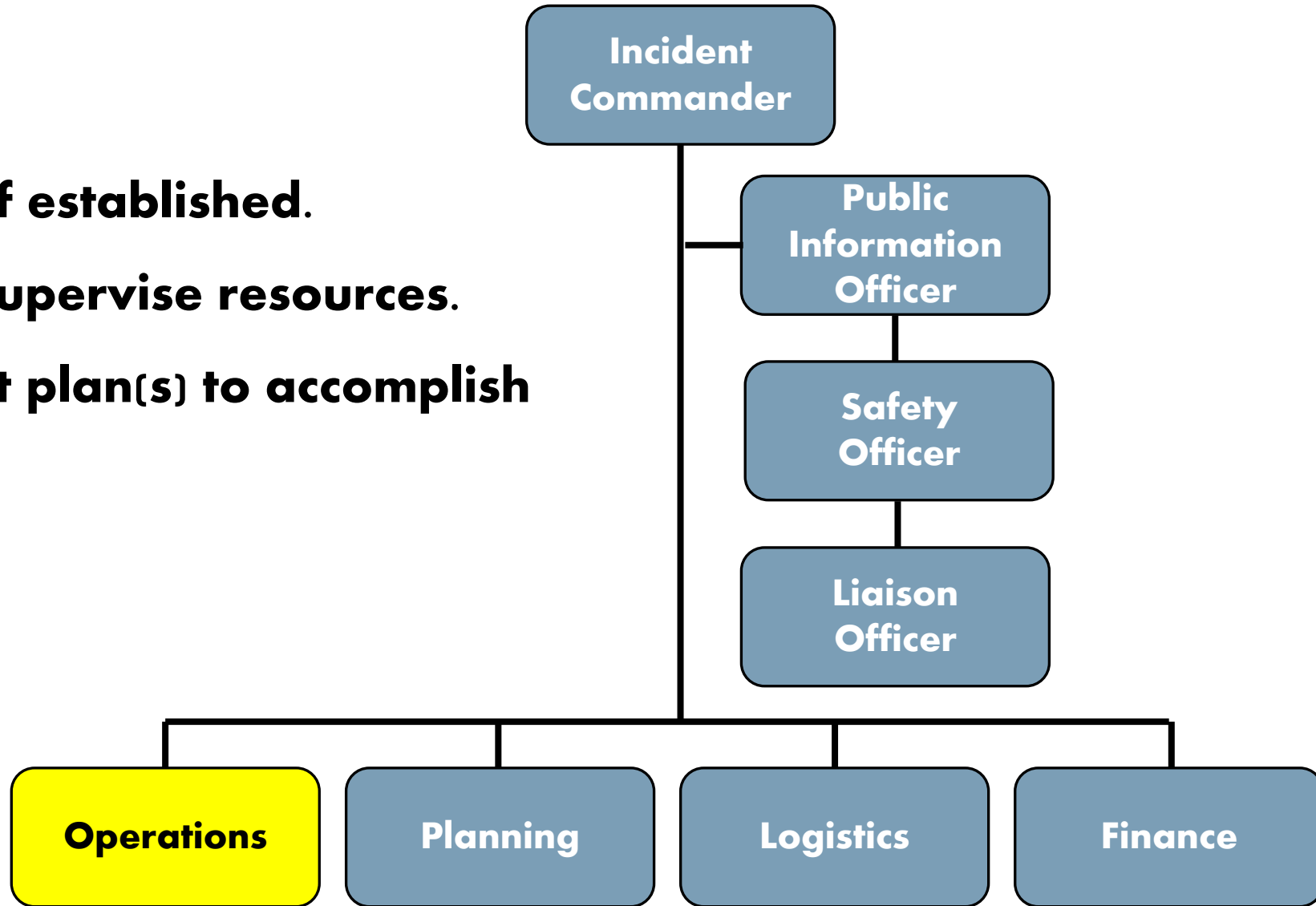
Liaison Officer

- **The go-between.**
- **Identify problems between agencies.**
- **Assist IC as point of contact for other agencies.**
- **Operational briefs to admin and other agencies.**
- **Respond to requests from personnel for contacts.**



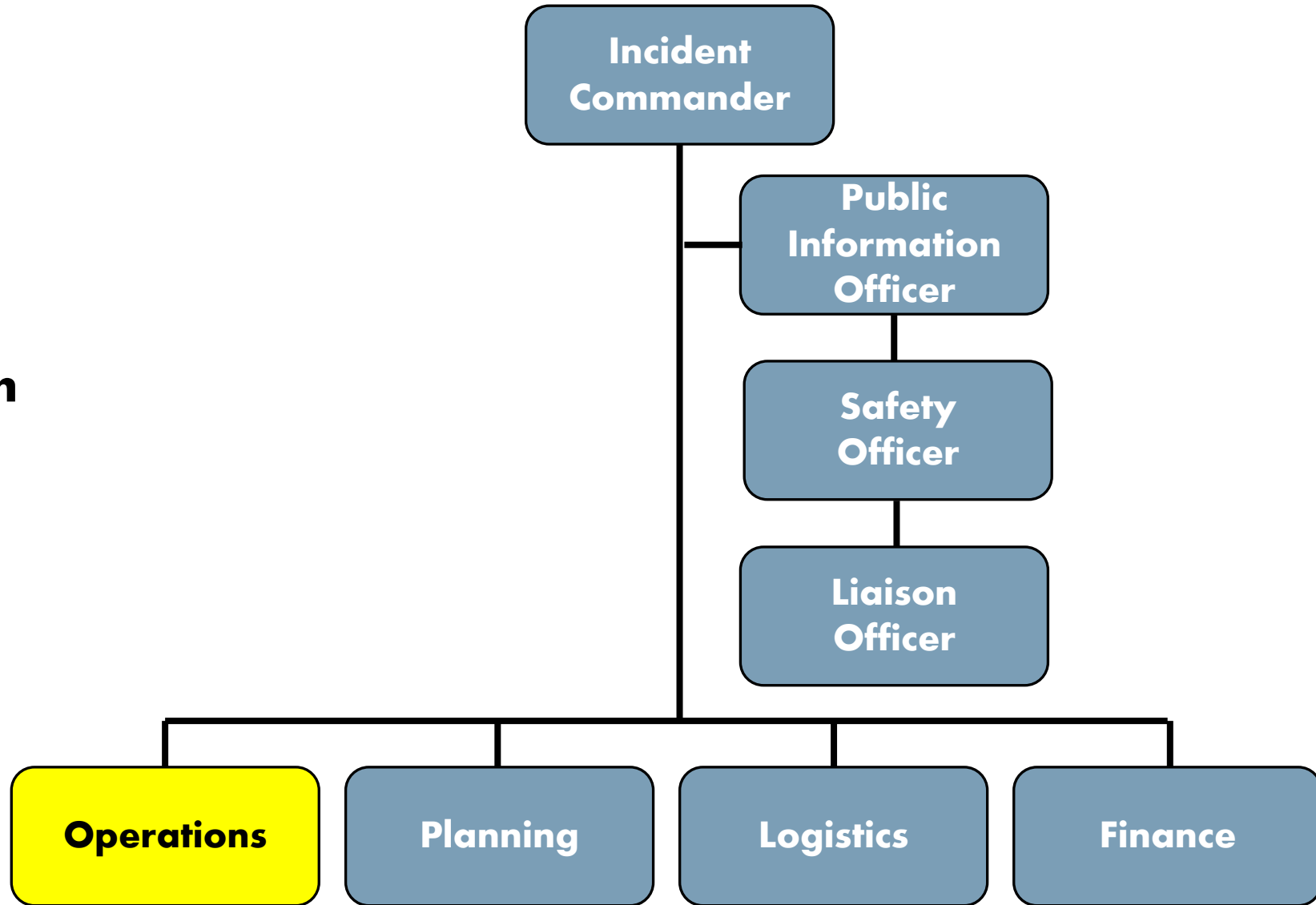
Operations Section Chief

- **Takes direction from IC.**
- **Manage staging area, if established.**
- **Organize, assign, and supervise resources.**
- **Develop and implement plan(s) to accomplish incident objectives.**



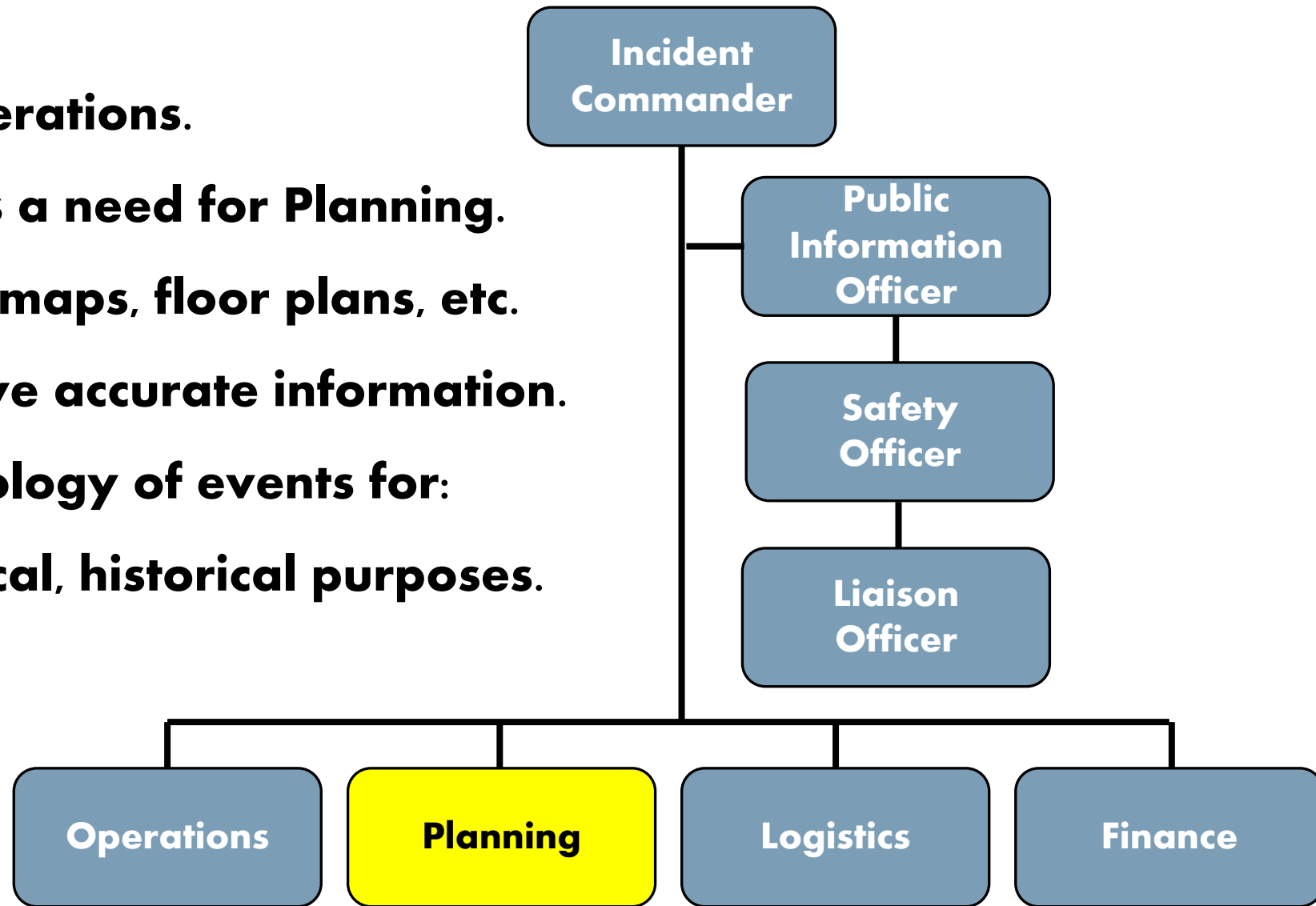
Operations *Sub-jobs*

- **Medical/First Aid**
- **Search and Rescue**
- **Evac/Shelter and Care**
- **Security Response Team**
- **Reunification**



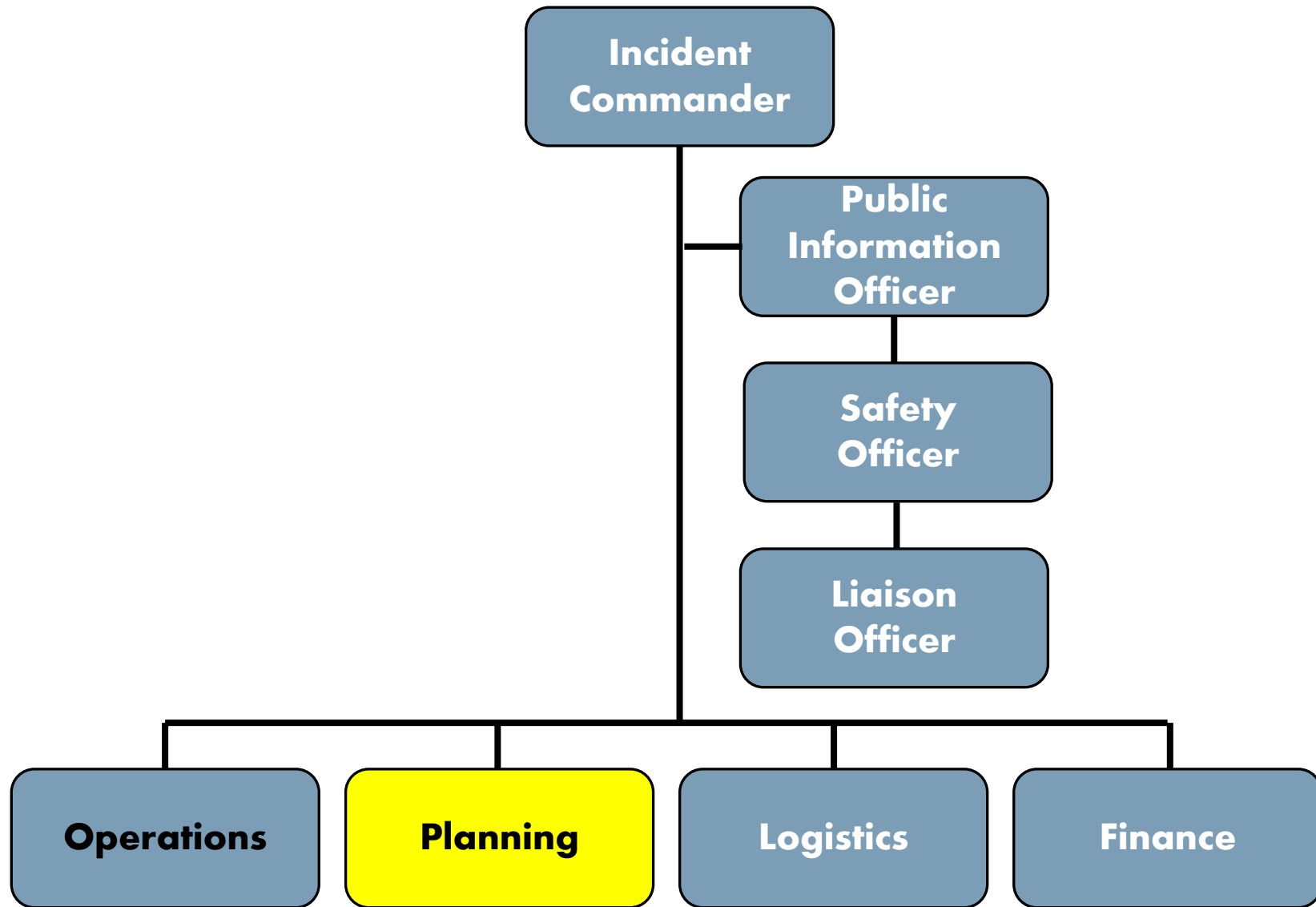
Planning Section Chief

- **Works closely with Operations.**
- **IC determines if there is a need for Planning.**
- **Provides resources, i.e. maps, floor plans, etc.**
- **Ensures responders have accurate information.**
- **Records incident chronology of events for:**
 - **Legal, analytical, fiscal, historical purposes.**



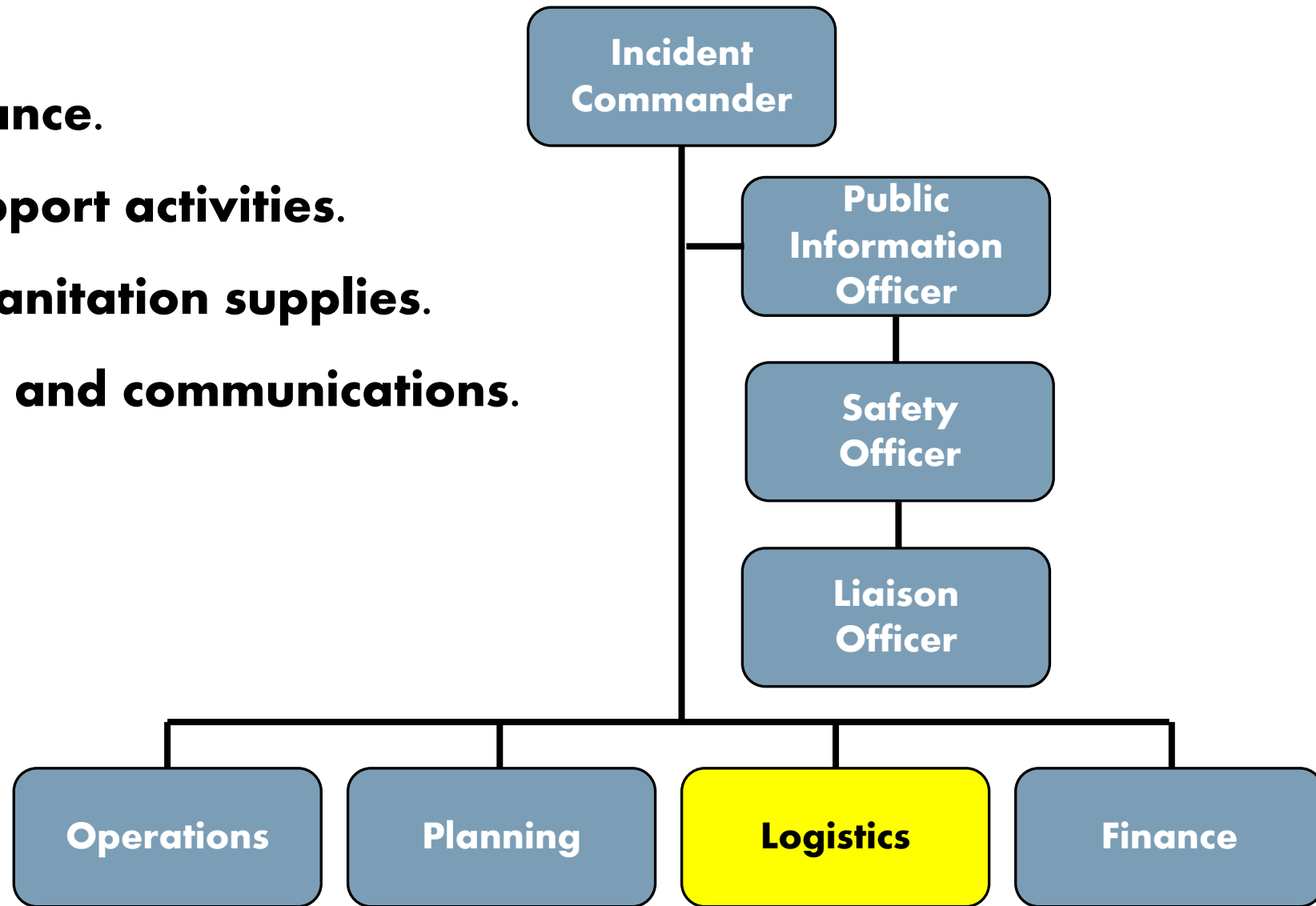
Planning *Sub-jobs*

- **Resources**
- **Documentation**
- **Demobilization**
- **Situation and status**



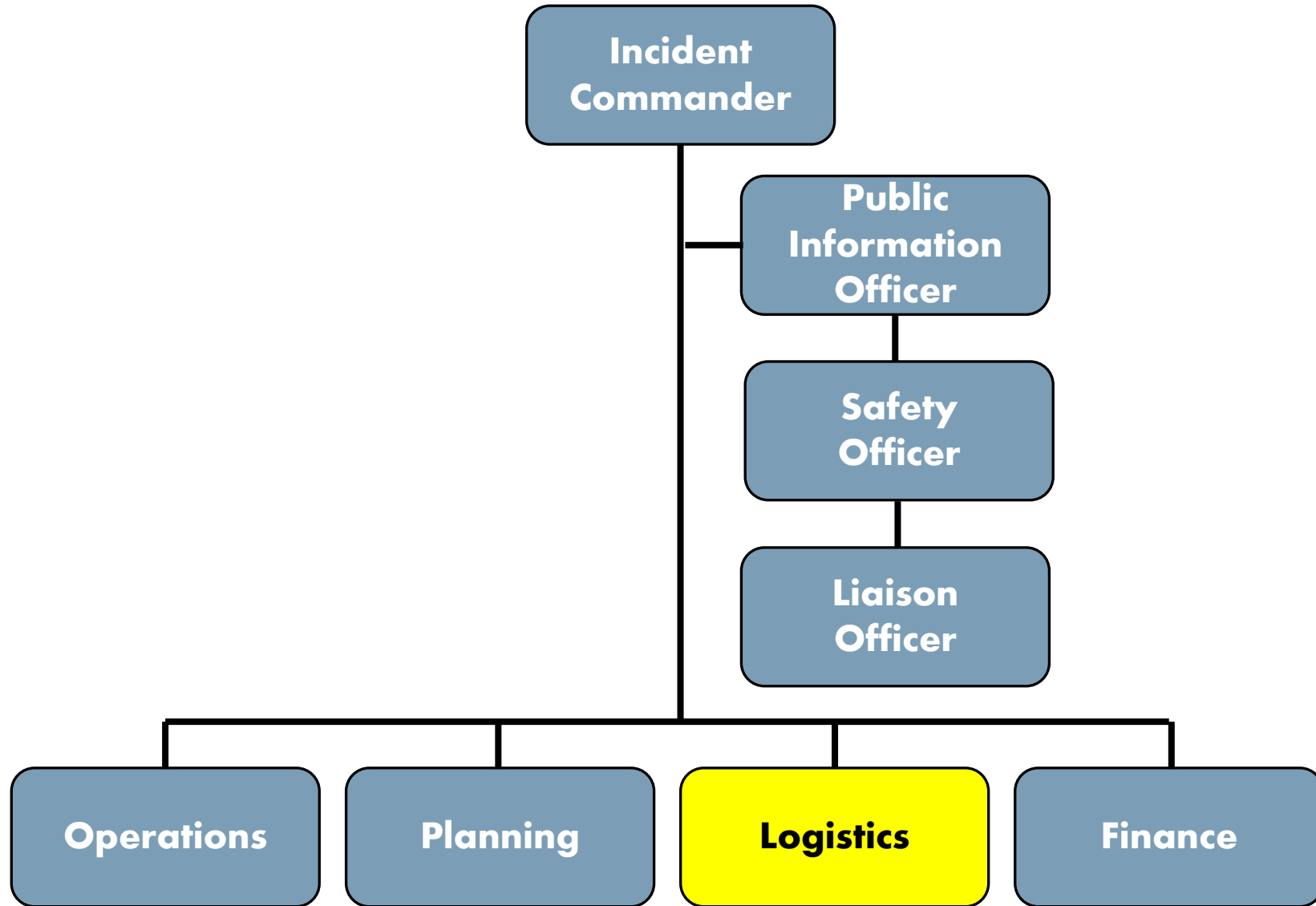
Logistics Chief

- **Works closely with Finance.**
- **Provide resource to support activities.**
- **Includes: food, water, sanitation supplies.**
- **Arrange transportation and communications.**



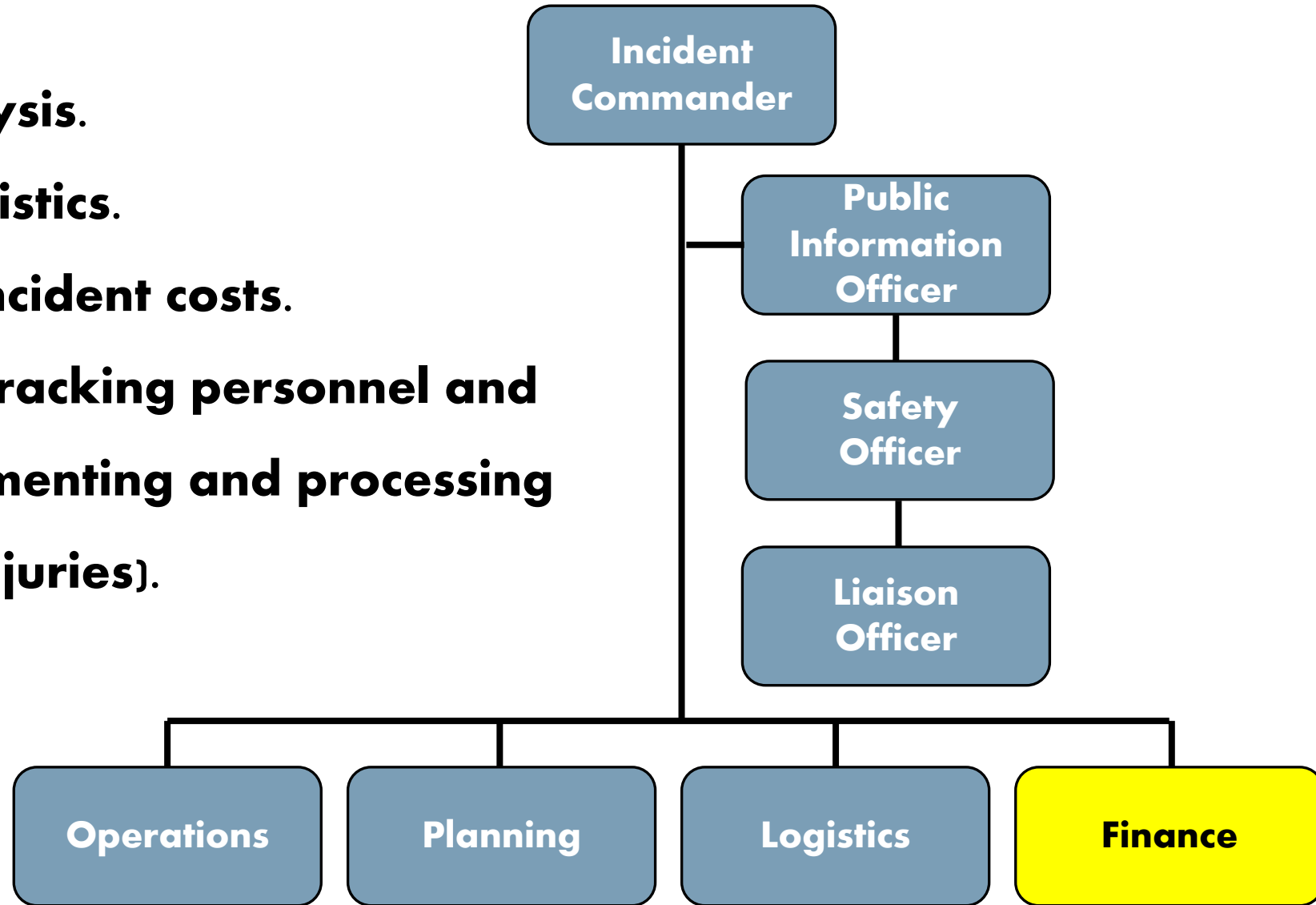
Logistics *Sub-jobs*

- **Facilities**
- **Transportation**
- **Communications/IT**
- **Food/Supplies/Staffing**



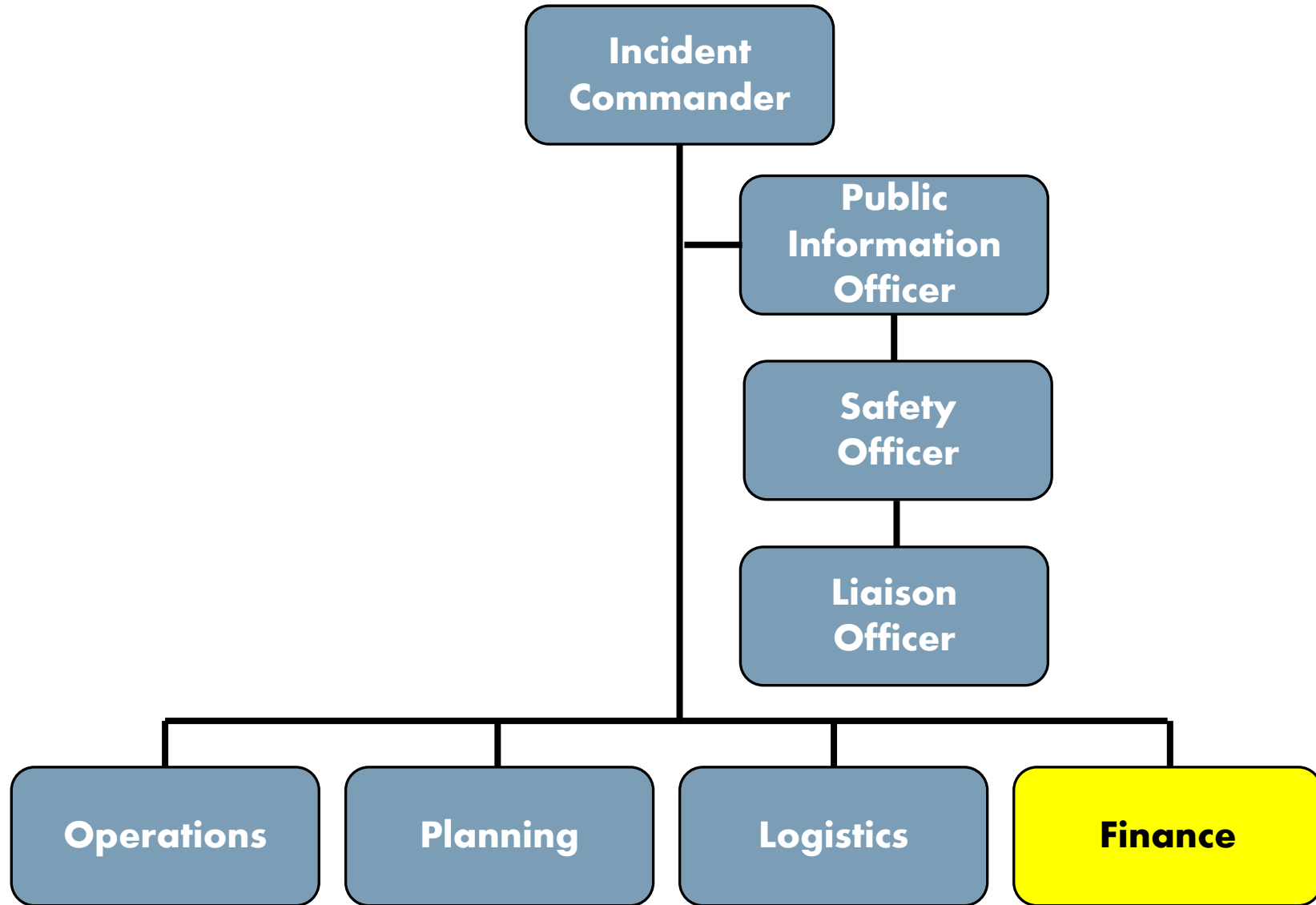
Finance Chief

- **Financial and cost analysis.**
- **Works closely with Logistics.**
- **Keep running tally of incident costs.**
- **Contract negotiations, tracking personnel and equipment times, documenting and processing claims (accidents and injuries).**



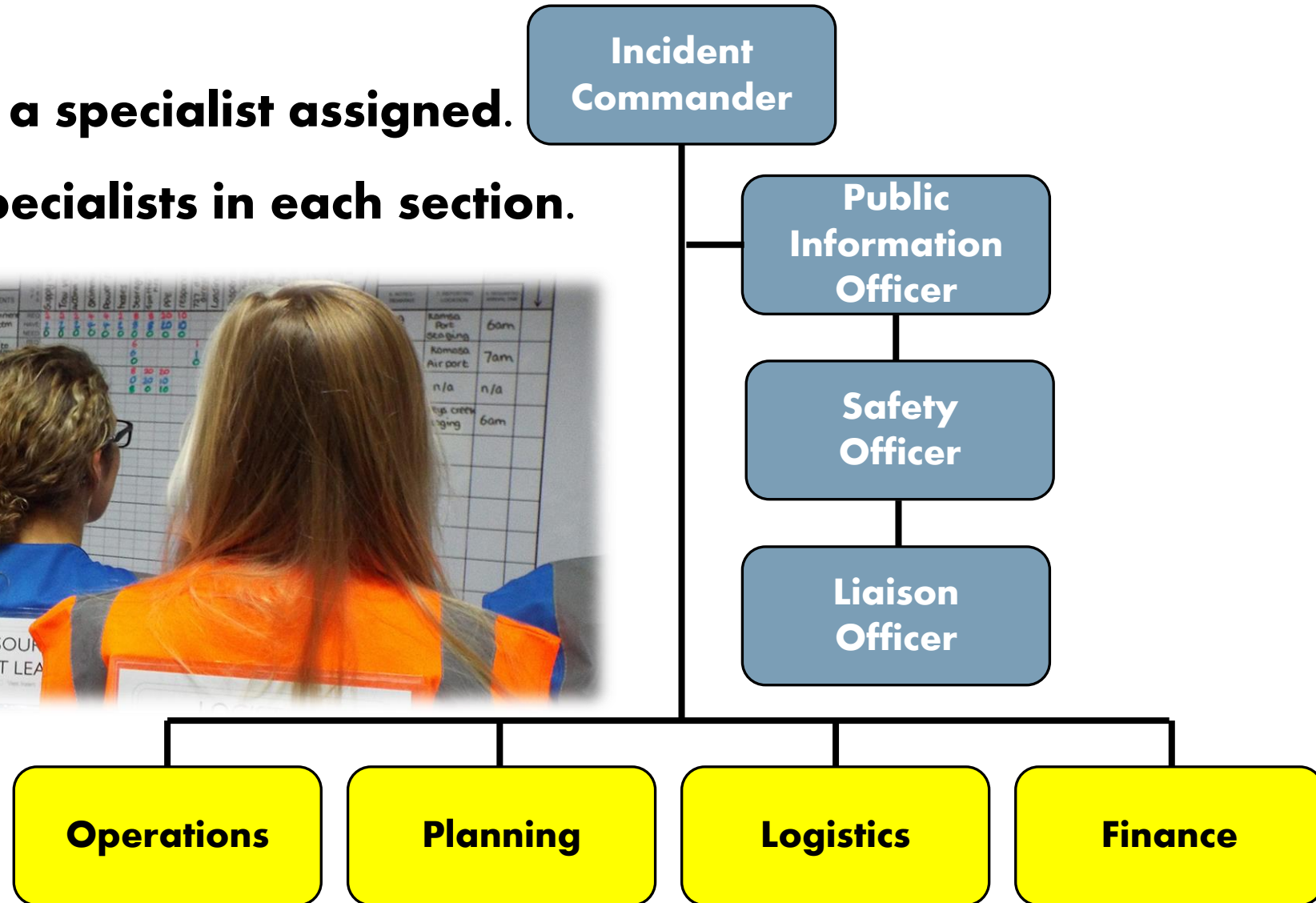
Finance *Sub-jobs*

- **Accounting**
- **Compensation/Claims**

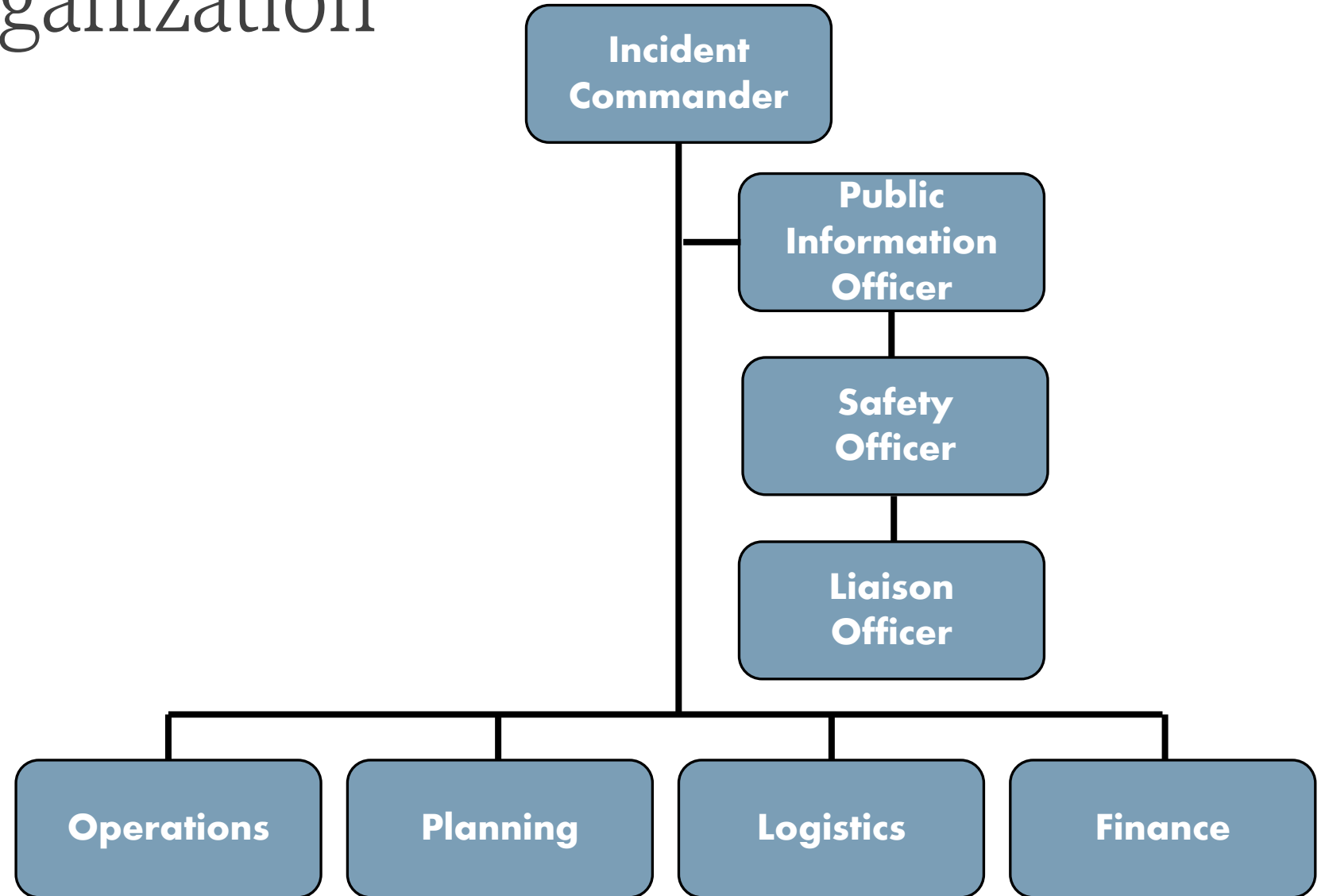


Sub-jobs

- **Each sub-job may have a specialist assigned.**
- **There could be many specialists in each section.**



Basic ICS Organization



Closing



Emergency
Operations
Plan



Training



Assessments



Questions? Comments?

CBL TRAINING AND CONSULTING

WWW.CBLTAC.US

JOHN@CBLTAC.US

(916) 998-0502