

CalEPA and BDO Roles in Emergency Management and Disasters



STATE WATER RESOURCES CONTROL BOARD
REGIONAL WATER QUALITY CONTROL BOARDS



DATE PRESENTED: May 26, 2022

PRESENTERS: Jason Boetzer & John Elkinsj

Bad Things Happen!



When “it” happens, we need to be ready

We have a shared responsibility to mitigate, prepare for, and be available to respond to potential and actual emergency hazards



Emergency Phases

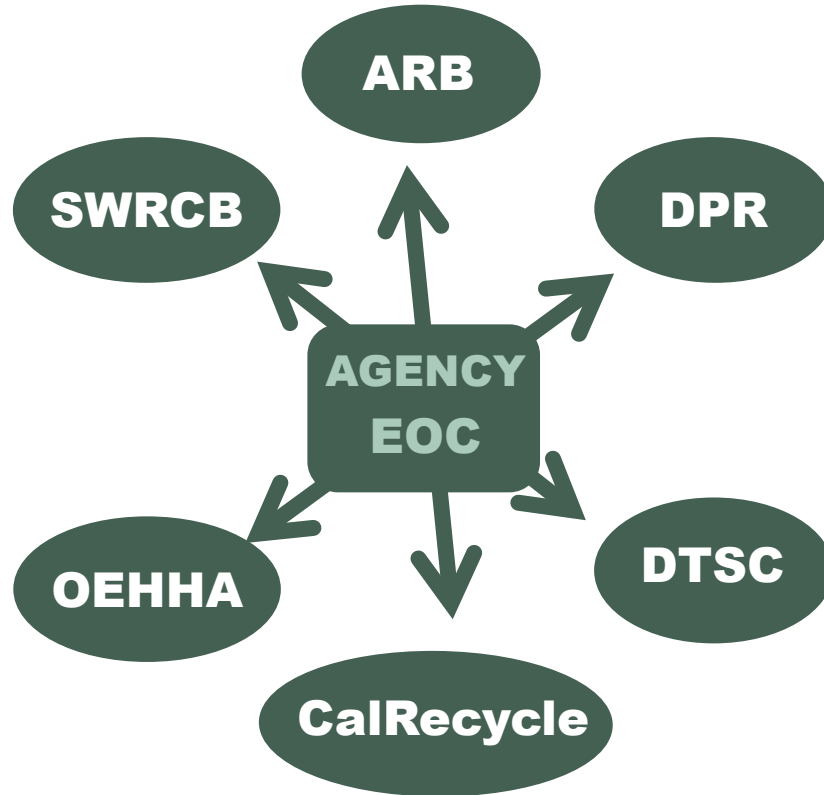
CalEPA Mission

To restore, protect and enhance the environment, to ensure public health, environmental quality and economic vitality

CalEPA Emergency Response Management Committee (ERMAC) Mission
“... to effectively manage the public health and environmental consequences of emergency events through coordinated, agency-wide preparedness, response, recovery, and mitigation activities.”

One Team, One CalEPA

Emergency Response Management Committee (ERMaC)



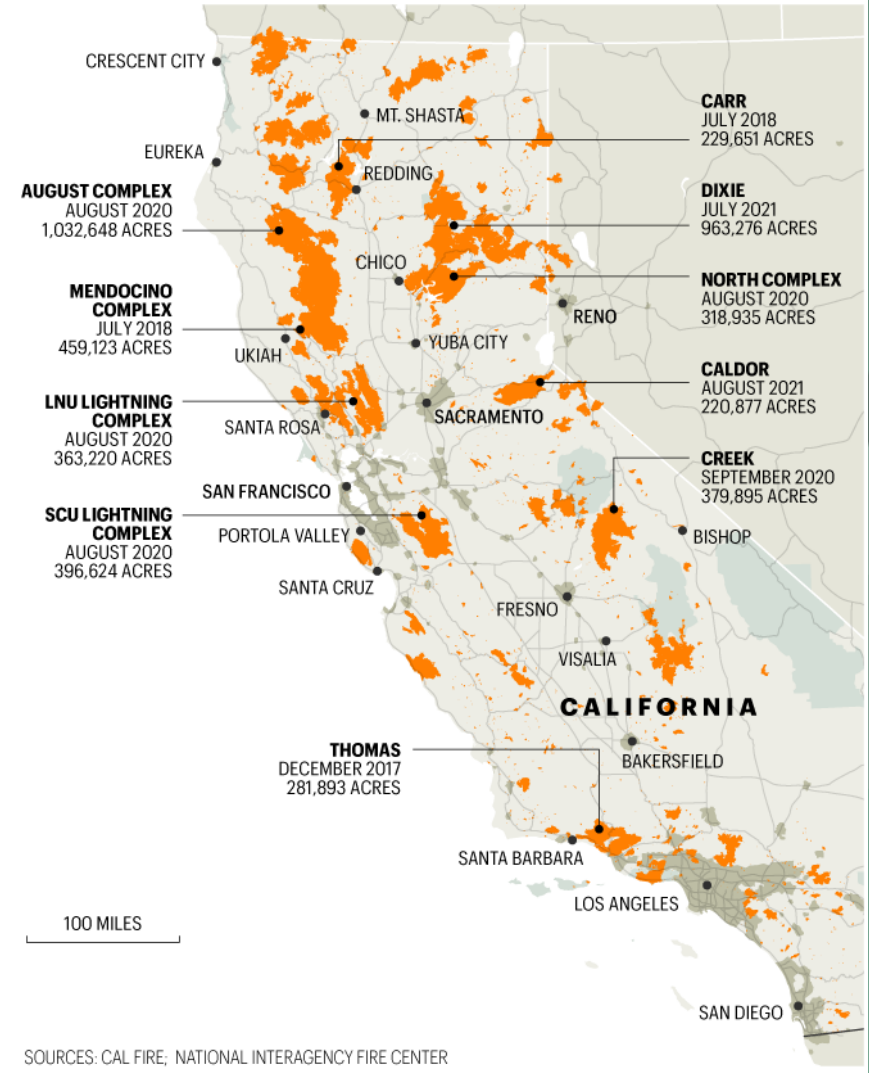
Partners:

- CDFW/OSPR
- CDPH
- USEPA
- CalOES
- CDFA

Emergency Management in California

Top 10 Largest Wildfires in California since 2017

■ TOTAL AREA BURNED, 2017-2021



SOURCES: CAL FIRE; NATIONAL INTERAGENCY FIRE CENTER

Key Points

- ▶ Environmental Health/Management have *increasing roles* during and following emergencies
- ▶ Recent events (e.g., fires, COVID-19, PSPS) are compounding and complex
- ▶ Emergency Management functions require significant *pre-event commitment*
- ▶ Activities are *labor intensive and costly*
- ▶ All emergencies start and end at the local level

California Emergency Services Act (ESA)

- ▶ Created the California Office of Emergency Services (CalOES)
- ▶ Establishes specific requirements and criteria
- ▶ Requires the State of California to have a State Emergency Plan (SEP)
- ▶ Grants the Governor and CalOES Director authority to make Emergency Proclamations
 - ▶ And can direct CALEPA and the BDOs to perform specific tasks (mission tasking)

How Does CalEPA/BDOs Prepare for Emergencies?

State Emergency Plan (SEP)

- ▶ Establishes Emergency Functions (CA ESF)
- ▶ CalEPA is the lead agency for CA ESF-10, Oil and Hazardous Materials and a primary agency for Recovery Support Function-Natural and Cultural Resources
- ▶ CalEPA supports 8 out of 16 ESFs



CalEPA Lead Agency for CA Emergency Support Functions (ESF)10

- CA ESF 1 Transportation
- CA ESF 2 Communications
- CA ESF 3 **Construction and Engineering**
- CA ESF 4 **Fire and Rescue**
- CA ESF 5 Management
- CA ESF 6 **Care and Shelter**
- CA ESF 7 Resources
- CA ESF 8 **Public Health and Medical**
- CA ESF 10 **Hazardous Materials**
- CA ESF 11 **Food and Agriculture**
- CA ESF 12 **Utilities**
- CA ESF 13 Law Enforcement
- CA ESF 14 **Recovery**
- CA ESF 15 **Public Information**
- CA ESF 17 Volunteer and Donations Management
- CA ESF 18 Cyber (under development)

CalEPA Involved in all Recovery Support Functions (RSF):

- **Community Planning and Capacity Building**
- **Economic**
- **Health and Social Services**
- **Housing**
- **Infrastructure**
- **Natural and Cultural Resources***



*CalEPA is involved with all functions in **orange**

CalEPA and Emergency Management- Components ESF-10

- ▶ BDO/Agency Expertise
 - ▶ Ensure internal coordination to support local response and recovery
- ▶ California Emergency/Recovery Support Function
 - ▶ Represent and coordinate activities at the State Operations Center



ICS/NIMS/SEMS

- ▶ System/Framework for coordinated response
- ▶ Standardized processes and procedures
 - ▶ Mutual Aid Requests
- ▶ Management of all aspects and phases of ER



Emergency Declarations

- ▶ Governor proclaims an emergency (usually responding to a request from local government), State Operations Center activated, California Disaster Assistance Act (CDAA) fund opened. Examples:

- Drought
- Earthquake
- Fires
- COVID-19
- Dam Failures
- Oil Spills



- ▶ Local Health Officer Order-Health and Safety Code section 101040 authorizes the Health...

Primary CalEPA & BDO Response Activities

What Do We Really Do?
(And Don't Do)

Air Resources Board

- ▶ PM 2.5 air monitoring and coordination with other agencies (e.g., local air districts, US Forest Service)
- ▶ Works with California Air Response Planning Alliance (CARPA) on emergency messaging
- ▶ Shares air monitoring data with many agencies



Air Resources Board does NOT...

- ▶ Air monitoring of CBRNE
(Chemical/Biological/Radiation/Nuclear/Explosive)
- ▶ Air monitoring within the 'Hot Zone'
- ▶ Short term incidents
- ▶ No emergency duty officer



Department of Toxic Substances Control

- ▶ Provides support to local law enforcement agencies regarding:
 - ▶ removal of hazardous substances from illegal drug labs
 - ▶ release or the threatened release of hazardous substances
 - ▶ Emergency Response staff and contractor support during state and federally-declared disasters i.e. wildfires, floods, earthquakes, etc..
- ▶ Provides HazMat Technician-trained staff for hazmat assessment and response during state and federally-declared disasters
- ▶ Maintains a 24/7 Emergency Response
 - ▶ Duty Officer System



Department of Toxic Substances Control does NOT...

- ▶ Respond to biohazard incidents
- ▶ Fund removal of radioactive waste
- ▶ Have staff and contractors that are first responders
- ▶ Respond to the release or threatened release of hazardous substances on federally-owned land and state-owned lands, except for drug labs
- ▶ Respond to releases of waste oil, petroleum fuels, or fuel spills
- ▶ Fund cleanup of hazardous substances on state highways



Department of Toxic Substances Control's Field Data Collection

- ▶ DTSC's Office of Environmental Information Management developed a data collection app for disaster-related activities for ER Staff
- ▶ Data synced with Local Requesting Agencies, OES, and CalRecycle giving a clear picture on status of response
- ▶ Dashboards were made available to public that showed current status and created transparency for stakeholders



Department of Toxic Substances Control's Phase I Dashboard

Fires 2021 - Household Hazardous Waste Assessment and Removal Dashboard
Dept. of Toxic Substances Control - US Environmental Protection Agency

Select an Incident: All Fires | Antelope | Beckwourth Complex | Cache | **Caldor** | Dixie | Lava | Monument | River | Tamarack

DTSC / US EPA Household Hazardous Waste Removal Incidents

Click on the button in the upper right to filter the dashboard to show information for the selected incident.

[Click here if viewing on a mobile device.](#)

DTSC and the US EPA are assessing and removing household hazardous waste and easily identifiable pieces of asbestos from homes and other structures destroyed in the incidents shown in the upper panel.

The dashboard lists total number of parcels impacted by the fire, number of parcels completed today, and number of parcels completed to-date. When the assessment and removal are completed on each parcel, the color will change to green. Green color indicates there is no follow-up necessary by DTSC or EPA HazMat crews for Phase 1.

EPA Identified Parcels

Fires2021 ParcelLayer

Parcel Status

- Assessed - Complete
- Assessed - Return Needed
- Identified
- No Access
- Deferred to Phase 2

Parcels Assessed Yesterday

0

These numbers indicate the total count of parcels assessed in the last 24 hours for all incidents unless you have filtered the data with the buttons located above.

Parcels Assessed To-Date

704

0 725

These numbers indicate the total count of parcels assessed for all incidents unless you have filtered the data with the buttons located above.

Department of Pesticide Regulation

- ▶ Provides technical support and oversight to County Agricultural Commissioners - Inspections, Investigations, Sampling, and Cease and Desist Orders
- ▶ Coordinates with US EPA Region IX on pesticide related issues and incidents
- ▶ Develops risk characterization and exposure assessment documents
- ▶ Maintains/Provides environmental and eco-toxicological data on registered pesticides including inventories of air, ground and surface water monitoring data



Department of Pesticide Regulation does NOT...

- ▶ Have staff or contractors that are Pesticide HazMat First Responders
- ▶ Maintain a 24/7 Emergency Response Duty Officer
- ▶ Remove or fund removal of pesticide wastes



California Department of Resource, Recycling and Recovery

- ▶ Provide technical assistance to Local Enforcement Agencies (LEAs)
- ▶ Facilitate and review the Emergency Waiver of Standards issued by LEAs to landfill operators following a proclamation of emergency or declaration of disaster at the local or State levels
- ▶ Evaluate disaster-related impacts to solid waste facilities
- ▶ Provide technical guidance and assistance to local jurisdictions in the development of debris management plans to recycle, reuse, or otherwise divert disaster debris from disposal
- ▶ In coordination with CalOES, implement Phase II Disaster Debris Removal Program



California Department of Resource, Recycling and Recovery does NOT...

- ▶ Maintain a 24/7 Emergency Response Duty Officer system
- ▶ Have a mandated coordinated disaster debris removal program
 - ▶ Only authorized if the Governor declares a State of Emergency and authorizes state agencies to assist with debris removal



Office of Environmental Health Hazard Assessment

- ▶ Provides toxicologists, research scientists, and subject matter experts
- ▶ Assesses health effects and characterizes risk
- ▶ Provides toxicological information, risk assessment and public health recommendations
- ▶ Assists in decision making on sheltering-in-place, evacuation, re-entry, and clearance
- ▶ Determines health and environmental impacts of chemicals
- ▶ Reviews sampling data and provides recommendations
- ▶ Provides seafood safety assessments relating to oil spills and high levels of toxic substances



Office of Environmental Health Hazard Assessment does NOT...

- ▶ Have laboratory services
- ▶ Provide certifications of clean, safe, or free of health concerns
- ▶ Have enforcement activities
- ▶ Perform cleanup activities
- ▶ No emergency duty officer



State Water Resources Control Board

- ▶ Division of Drinking Water
 - ▶ Responsible for ensuring safe drinking water
 - ▶ (Some smaller drinking water systems are regulated by local government)
 - ▶ Determines level of precautions (e.g., Do Not Use, Boil Water Notice)
 - ▶ Coordinates with local public/environmental health and water districts
 - ▶ Has 20+ offices staffed with engineers statewide
- ▶ Regional Water Quality Control Boards
 - ▶ Ensures appropriate management of waste water

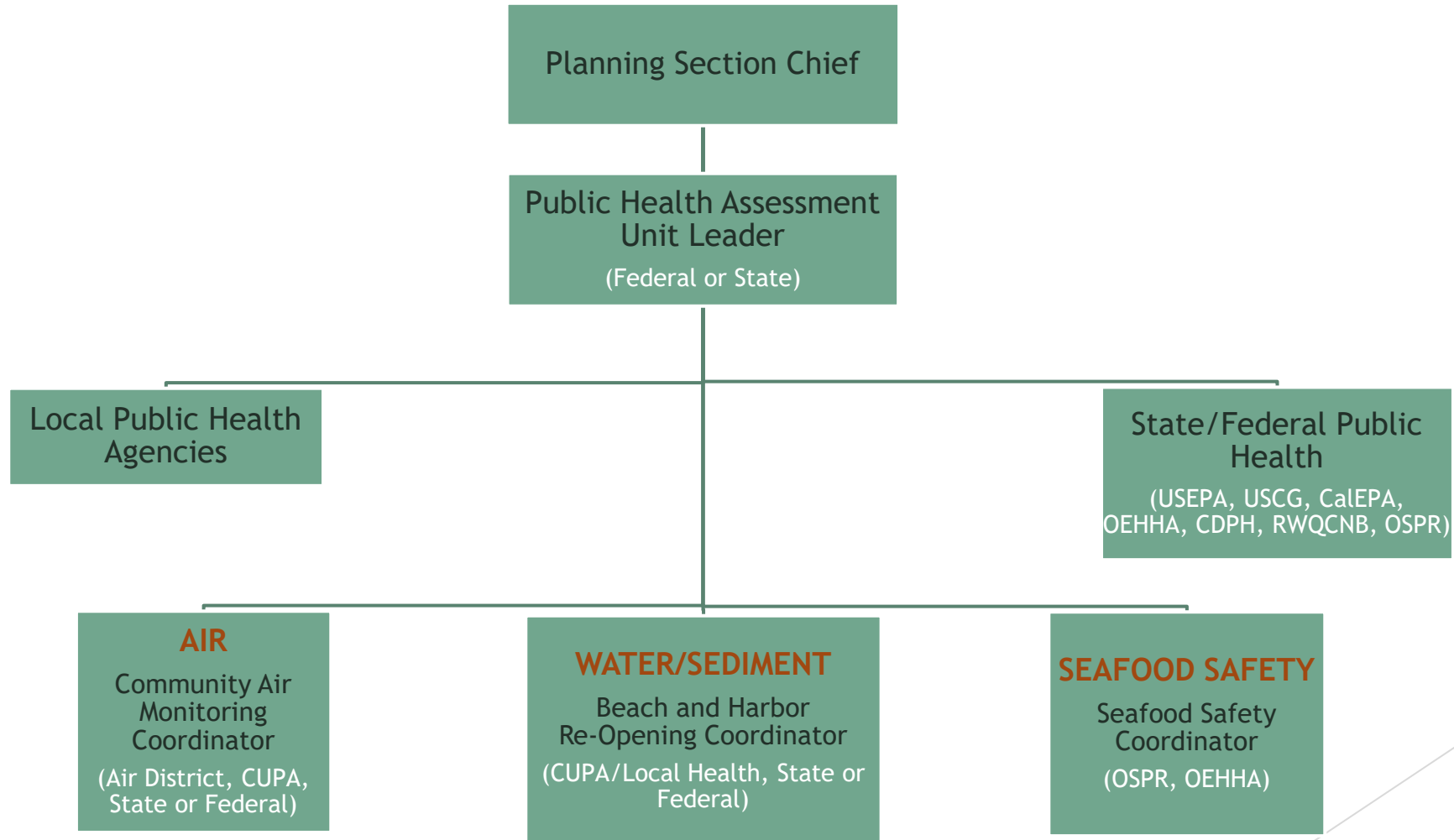


State Water Resources Control Board does NOT...

- ▶ Have jurisdiction over the State Water Project
- ▶ Prevent and Respond to Floods, Droughts, and Catastrophic Events that would Threaten Public Safety, Water Resources and Management Systems



PHAU Organizational Chart





The Debris Mission

Protect the public health and safety and environment from impacts of ash, debris, and hazardous waste from burned home sites following wild land fire or earthquake



2021 CalEPA Mission Assignments

- ▶ CalEPA/ESF-10 Representative to report to the State Operations Center for COVID-19 SOC activation
- ▶ CalEPA/ESF-10 Representative to report to the State Operations Center for the Statewide Fires SOC activation
- ▶ Deployment of air monitors throughout the State to support affected air districts and air quality agencies
- ▶ Water Boards support and technical assistance with drought related needs
- ▶ Department of Toxic Substance Phase I Debris Removal of Household Hazardous Waste:
 - ▶ Tamarack Fire (Alpine Co.)
 - ▶ Cache Fire (Lake Co.)
 - ▶ Monument Fire (Trinity Co.)
 - ▶ August Fire (Nevada Co.)
 - ▶ Hopkins Fire (Mendocino Co.)
 - ▶ River Complex Fire (Trinity Co.)
 - ▶ Dixie Fire (Plumas Co., Lassen Co., Tehama Co.)
 - ▶ Caldor Fire (El Dorado Co.)
 - ▶ River Fire (Placer Co., Nevada Co.)
 - ▶ Beckwourth Fire (Plumas Co., Lassen Co.)
 - ▶ NKP Complex Fire (Tulare Co.)
 - ▶ Washington Fire (Tuolumne Co.)
 - ▶ Lava Fire (Siskiyou Co.)
 - ▶ Antelope Fire (Siskiyou Co.)
 - ▶ Fawn Fire (Shasta Co.)
 - ▶ French Fire (Kern Co.)
 - ▶ McFarland Fire (Tehama Co.)
 - ▶ Windy Fire (Tulare Co., Kern Co.)
- ▶ CalRecycle Phase II Debris & Hazardous Tree Removal

Wrap Up



Takeaways

- ▶ Bad things happen!
- ▶ Disasters are ~~low~~ *high* frequency but high consequence events
- ▶ California is a disaster-prone state
- ▶ CalEPA and its BDOs have an increasing role in emergency management
- ▶ If the Governor, or designee (e.g., CalOES) tasks CalEPA/BDOs, we comply
- ▶ CalEPA and BDOs are part of a large team of local, state, federal, nonprofit, and private entities
- ▶ Effective emergency management takes an investment in the 4 Ss (Stuff, staff, space, and systems)
- ▶ No matter how much communication and coordination is going on, it is never enough
- ▶ Capabilities and capacities must be maintained
- ▶ Effective emergency management improves day-to-day operations

ERMaC Resources

<https://calepa.ca.gov/disaster/>

CalEPA:

Jason Boetzer

Jason.Boetzer@calepa.ca.gov

John Elkins

John.Elkins@waterboards.ca.gov

Kristi Placencia

Kristi.Placencia@calepa.ca.gov

ARB:

Charles Pearson

Charles.Pearson@arb.ca.gov

Ken Stroud

Kenneth.Stroud@arb.ca.gov

DPR:

Sheryl Gill

Sheryl.Gill@cdpr.ca.gov

CalRecycle:

Tina Walker

Tina.Walker@CalRecycle.ca.gov

Bob Healy

Robert.Healy@CalRecycle.ca.gov

DTSC:

Adam Palmer

Adam.Palmer@dtsc.ca.gov

Nancy McGee

Nancy.McGee@dtsc.ca.gov

SWRCB:

Sarah Ries

Sarah.Ries@waterboards.ca.gov

SWRCB Emergency Management Program

EMP@waterboards.ca.gov

QUESTIONS

The background features abstract geometric shapes in various shades of green and grey, overlapping and creating a layered effect. The shapes are primarily triangles and polygons, with some appearing as thin lines or semi-transparent layers. The overall composition is clean and modern, with the text 'QUESTIONS' centered in a dark green, sans-serif font.